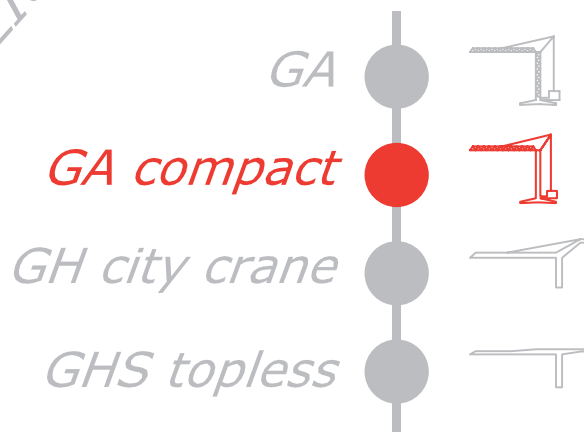


GRU A TORRE

GA 130

GRU AUTOMATICA CON
MONTAGGIO IDRAULICO



FB F.lli Butti s.r.l.

Via XXV Aprile, 58

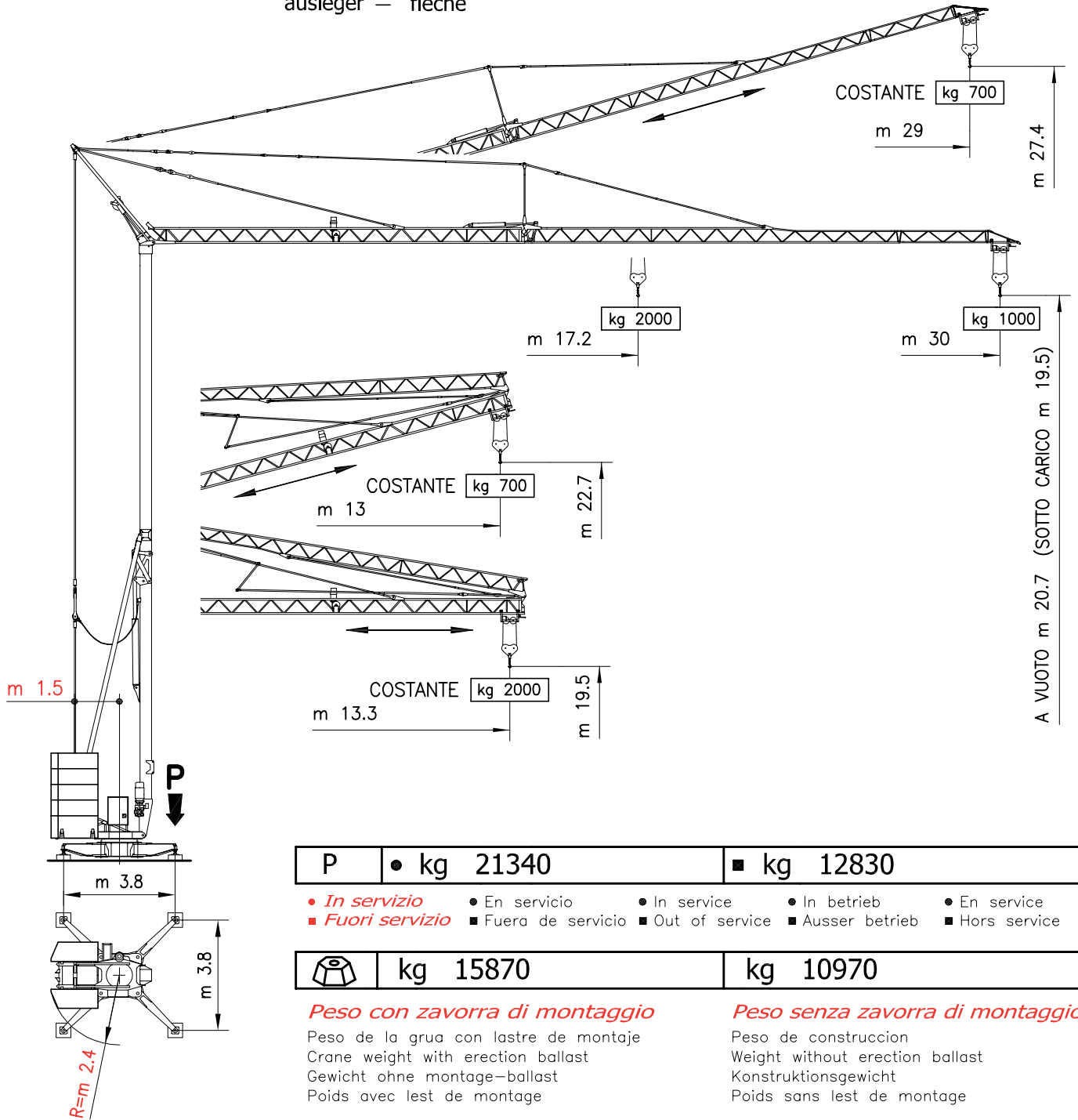
23868 Valmadrera (LC)

Tel. 0341.581108 - Fax 0341.200253

E-mail : fbgru@fbgru.it - <http://www.fbgru.it>



GA 130 braccio m 30 flecha — jib
ausleger — fleche



| | | |
|----------|------------|------------|
| P | ● kg 21340 | ■ kg 12830 |
|----------|------------|------------|

● *In servizio* ● En servicio ● In service ● In betrieb ● En service
 ■ *Fuori servizio* ■ Fuera de servicio ■ Out of service ■ Ausser betrieb ■ Hors service

| | | |
|--|----------|----------|
| | kg 15870 | kg 10970 |
|--|----------|----------|

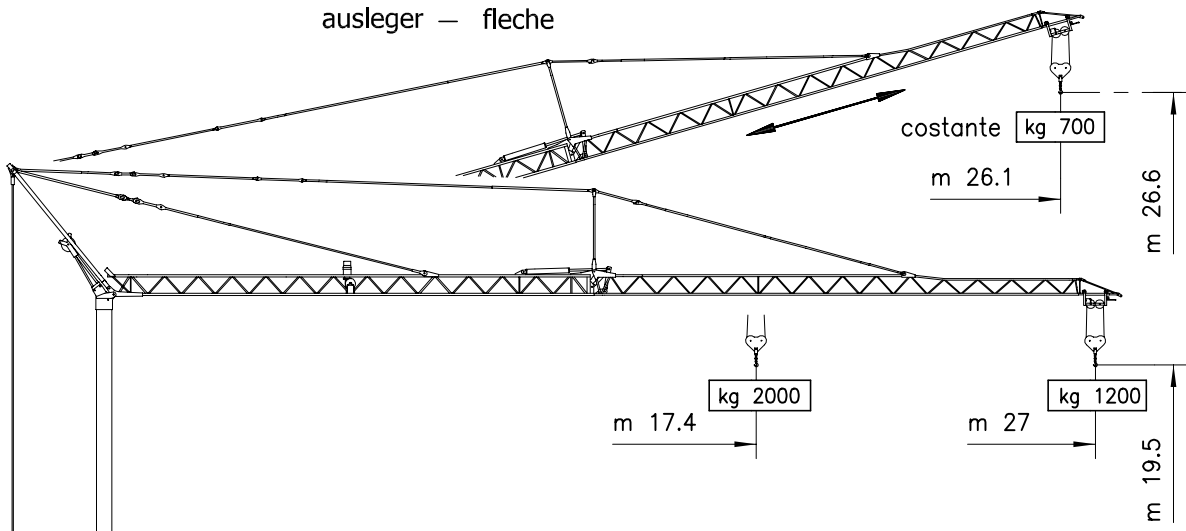
Peso con zavorra di montaggio

Peso de la grua con lastre de montaje
 Crane weight with erection ballast
 Gewicht ohne montage-ballast
 Poids avec lest de montage

Peso senza zavorra di montaggio

Peso de construcción
 Weight without erection ballast
 Konstruktionsgewicht
 Poids sans lest de montage


GA 130 braccio m 27 flecha — jib
ausleger — fleche

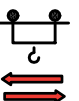



MECCANISMI

MECANISMOS – MECHANISMS
ANTRIEBE – MÉCANISMES

| | | | |
|---|---|---|--|
| MOVIMENTO MOVIMIENTO MOVEMENT BEWEGUNG MOUVEMENT | ALIMENTAZIONE ALIMENTACION OPERATING VOLTAGE BETRIEBSSPANNUNG TENSION DE SERVICE | PRESTAZIONI FUNCIONAMIENTOS PERFORMANCES LEISTUNGEN EXÉCUTIONS | POTENZA NECESSARIA POTENCIA NECESARIA POWER REQUIREMENT KRAFT DARF PUISSANCE NÉCESSAIRE |
|---|---|---|--|

| | | | | | |
|--|----------------|-------------|--------------|---------------|-----------|
| | | ▷ m/1' - kg | ▷▷ m/1' - kg | ▷▷▷ m/1' - kg | |
| SOLLEVAMENTO ELEVACION – HOISTING HEBEN – LEVAGE  | 400 V 50 Hz | 5 ↑↓ | 26 ↑ 27 ↓ | 40 ↑ 42 ↓ | kW 9.2 |
| INVERTER | | 2000 | 2000 | 1000 | |

| | | | | |
|--|----------------|--------|---------|-----------|
| | | ▷ m/1' | ▷▷ m/1' | |
| CARRELLO CARRILLO – JIB TROLLEY LAUFKATZE – DISTRIBUTION  | 400 V 50 Hz | 15 | 40 | kW 2.2 |
| INVERTER | | | | |

| | | | | |
|---|----------------|---------|------------|-----------|
| | | ▷ m/1' | ▷▷ m/1' | |
| ROTAZIONE ROTACION – SLEWING DREHEN – ORIENTATION  | 400 V 50 Hz | 0 → 0.2 | 0.2 → 0.85 | kW 2.2 |
| INVERTER | | | | |



Conforme alle direttive
CEE sul livello acustico
2000/14/CE

Conforme con las directivas
CEE sobre el nivel acustico

In compliance with the EEC
instructions on noise levell

Gemass EWG-Richtlinien für
den Schall-Leistungspegel

Conforme aux directives CEE
sur le niveau acoustique

CURVE DI CARICO

CURVAS DE CARGAS – LOAD DIAGRAMS
LASTKURVEN – COURBES DE CHARGES

| | | | | | | | | | | | | | | | |
|----|------|------|------|------|------|------|------|------|------|------|------|------|------|------|------|
| m | 17.2 | 17.4 | 18 | 19 | 20 | 21 | 22 | 23 | 24 | 25 | 26 | 27 | 28 | 29 | 30 |
| kg | 2000 | 1940 | 1896 | 1780 | 1678 | 1585 | 1501 | 1425 | 1356 | 1292 | 1234 | 1180 | 1130 | 1083 | 1000 |
| | | 2000 | 1927 | 1810 | 1705 | 1611 | 1527 | 1449 | 1379 | 1315 | 1255 | 1200 | | | |

| | | | |
|--|---|--|--------|
| BRACCIO IMPENNATO FLECHA IZADA LUFFING JIB AUSLEGER IN STEILSTELLUNG FLÈCHE RELEVÉE | ↔ | Carrellino distributore Carrellino distribuidor – Traversing trolley Verfahrbare laufkatze – Chariot distributeur | kg 700 |
| | | | |

POTENZA RICHIESTA

POTENCIA-ELECTRICA NECESARIA – NECESSARY ELECTRIC POWER
KRAFTBEDARF – PUISSANCE ELECTRIQUE NECESSAIRE

| | | | |
|---|----------------------------|---|----------------|
| ALIMENTAZIONE TRIFASE TRIFASICA THREE PHASE DREIPHASIGE TRIPHASE | 14 kw 400 V - 50 Hz | SOLLEVAMENTO ELEVACION HOISTING HEBEN LEVAGE | kg 2000 |
|---|----------------------------|---|----------------|

Con riserva di modifiche

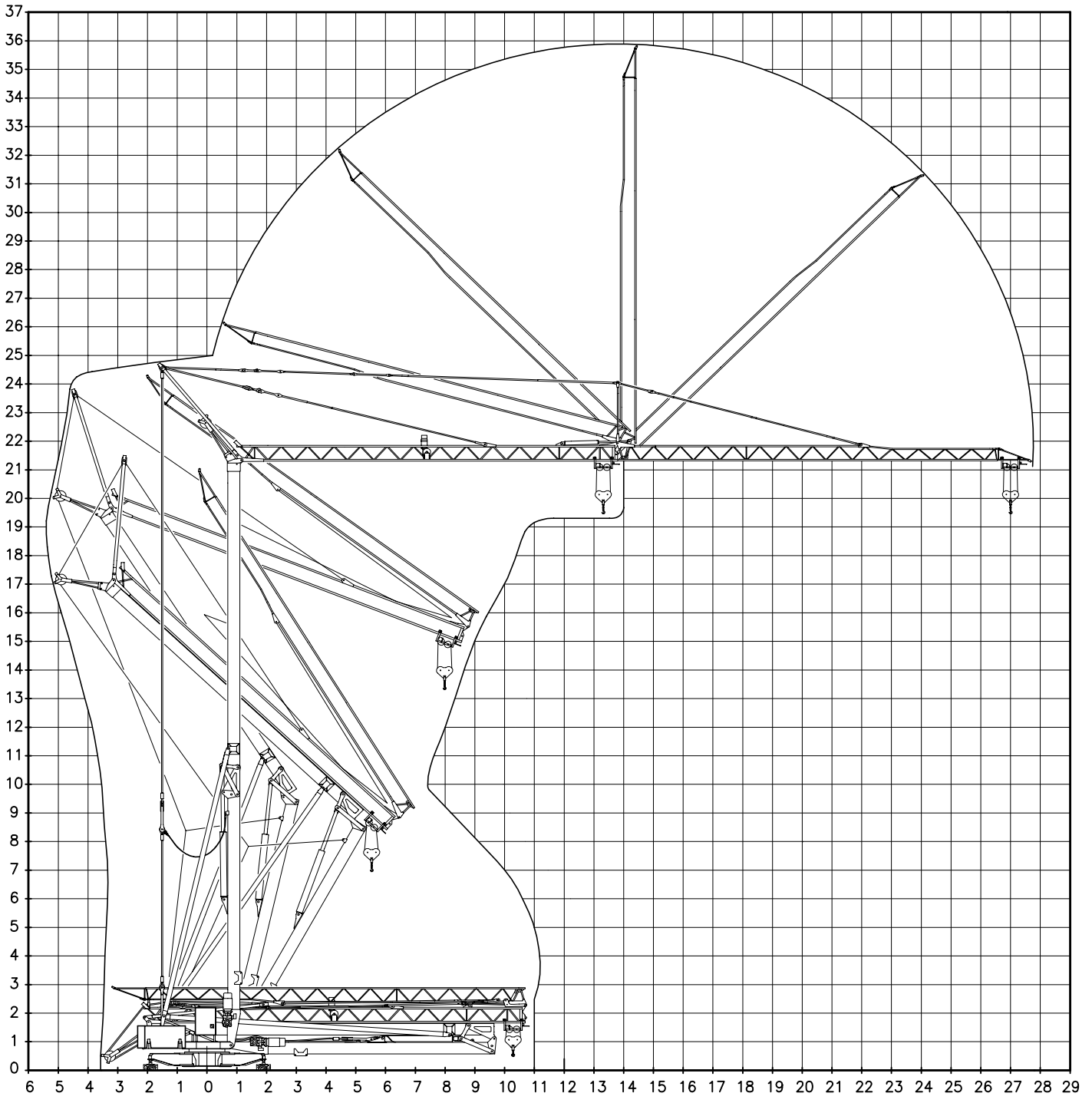
Derecho de modificaciones reservadas

Subject to change without notice

Änderungen vorbehalten

Modifications réservées

MONTAGGIO MONTAJE — ERECTION
MONTAGE — MONTAGE



TRASPORTO TRANSPORTE — TRANSPORT
TRANSPORT — TRANSPORT

