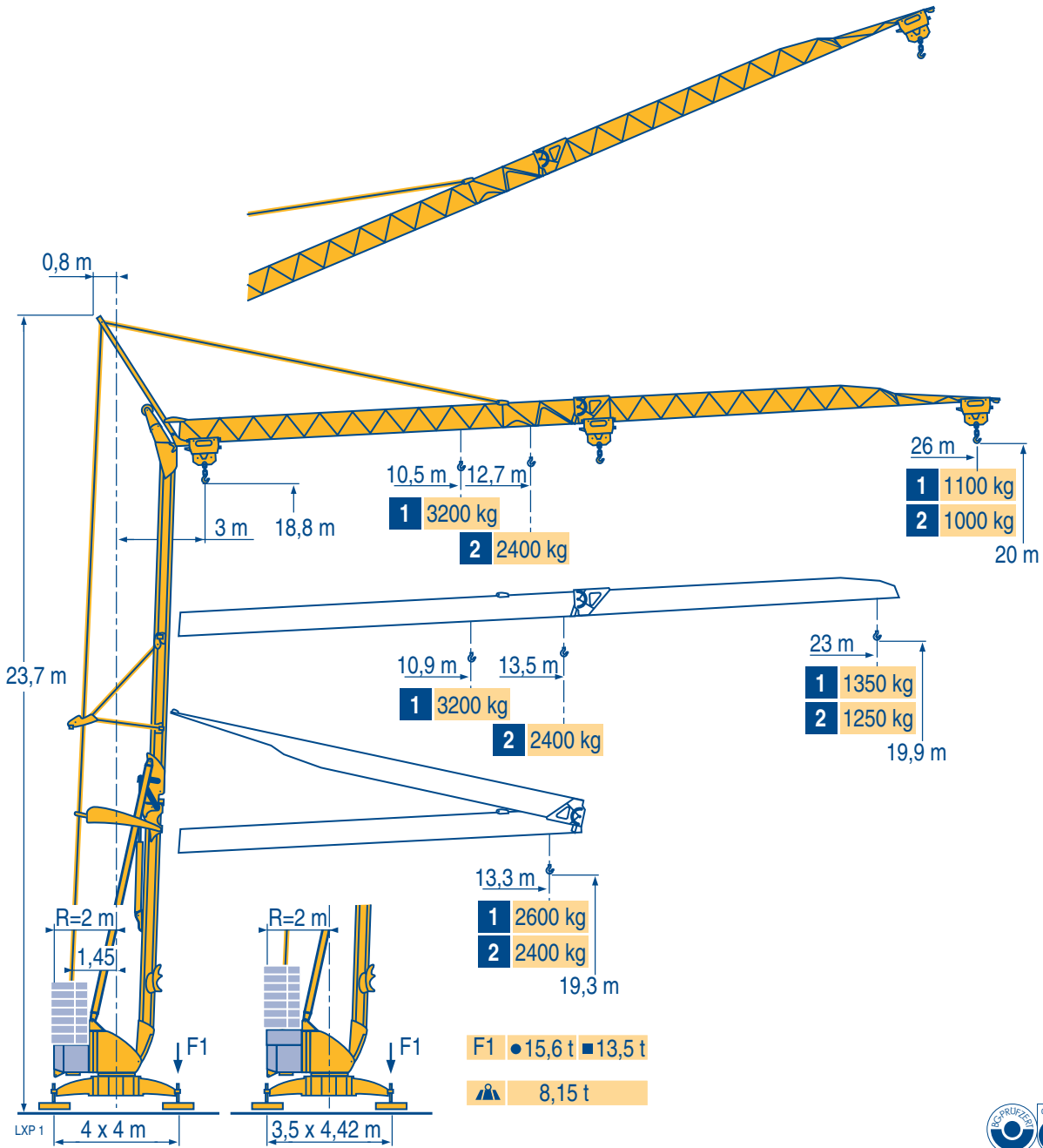
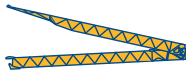


## Igo 26



Courbes de charges  
Lastkurven  
Load diagrams  
Curvas de cargas



**1 3200 kg**

Curve di carico  
Curva de cargas

26 m	3	▶11,3	12	13,3 m
		3200	2960	2600 kg

10,5	11	12	13	14	15	16	17	18	19	20	21	22	23	24	25	26 m
3200	2990	2680	2420	2200	2020	1860	1725	1605	1495	1405	1320	1240	1175	1110	1055	1000 kg

1600	1515	1425	1350	1275	1215	1155	1100 kg
------	------	------	------	------	------	------	---------

LXP 1

23 m	3	▶11,3	12	13,3 m
		3200	2960	2600 kg

10,9	11	12	13	14	15	16	17	18	19	20	21	22	23 m
3200	3170	2840	2565	2335	2140	1975	1830	1705	1590	1495	1405	1325	1250 kg

1600	1505	1425	1350 kg
------	------	------	---------

**2 2400 kg**

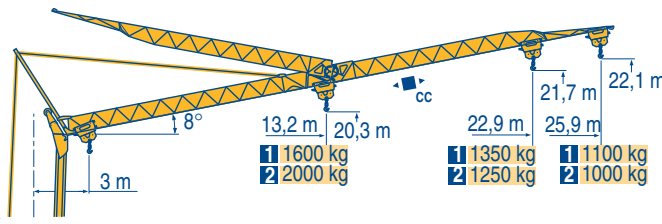
26 m	3	▶	13,3 m
		2400	2400 kg

12,7	13	14	15	16	17	18	19	20	21	22	23	24	25	26 m
2400	2340	2130	1960	1810	1680	1570	1470	1380	1300	1230	1165	1105	1050	1000 kg

23 m	3	▶	13,3 m
		2400	2400 kg

13,5	14	15	16	17	18	19	20	21	22	23 m
2400	2285	2100	1940	1805	1685	1575	1480	1395	1320	1250 kg

Flèche relevée  
Ausleger in Steilstellung  
Luffing jib  
Flecha izada  
Braccio impennato  
Lança inclinada



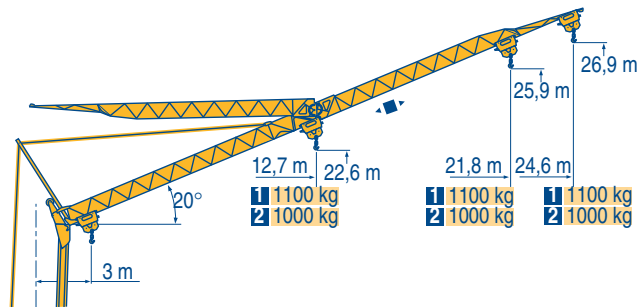
<b>1</b>	26 m	3	▶	18	19	20	21	22	23	24	25	25,9 m
		1600	1490	1395	1310	1235	1165	1105	1045	1000 kg	1000 kg	1100 kg

23 m	3	▶	18,9	19	19,9	20	21	22	22,9 m
		1600	1585	-	1485	1395	1315	1250 kg	1250 kg

<b>2</b>	26 m	3	▶	14,7	16	19	21	22	23	24	25	25,9 m
		2000	1800	1460	1295	1225	1160	1100	1045	1000 kg	1000 kg	1100 kg

23 m	3	▶	15,5	16	19	20	21	22	22,9 m
		2000	1930	1570	1475	1390	1310	1250 kg	1250 kg

LXP 1



<b>1</b>	26 m	3	▶	24,6 m
		1000 kg	1100 kg	1100 kg

23 m	3	▶	21,8 m
		1000 kg	1100 kg

<b>2</b>	26 m	3	▶	24,6 m
		1000 kg	1000 kg	1000 kg

23 m	3	▶	21,8 m
		1000 kg	1000 kg

Igo 26



**F**  
Chariot distributeur  
Chariot distributeur et courbes de charges  
Réactions en service  
Réactions hors service  
A vide sans lest (ni train de transport) avec flèche et hauteur maximum.

**D**  
Verfahrbare Laufkatze  
Verfahrbare Laufkatze und Lastkurven  
Reaktionskräfte in Betrieb  
Reaktionskräfte außer Betrieb  
Ohne Last, Ballast (und Transportachse), mit Maximalausleger und Maximalhöhe.

**GB**  
Traversing trolley  
Traversing trolley and load diagrams  
Reactions in service  
Reactions out of service  
Without load, ballast (or transport axes), with maximum jib and maximum height.










**E**  
Carro distribuidor  
Carro distribuidor y curvas de cargas  
Reacciones en servicio  
Reacciones fuera de servicio  
Sin carga, sin lastre, (ni tren de transporte), flecha y altura máxima.

**I**  
Carrellino distributore  
Carrellino distributore e curve di carico  
Reazioni in servizio  
Reazioni fuori servizio  
A vuoto, senza zavorra (ne assali di trasporto) con braccio massimo e altezza massima.

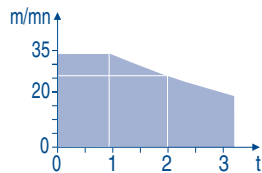
**P**  
Carro distribuidor  
Carro distribuidor e curva de cargas  
Reações em serviço  
Reações fora de serviço  
Sem carga (nem trem de transporte) - sem lastro com lança e altura máximas.

Mécanismes  
Antriebe  
Mechanisms  
Mecanismos  
Meccanismi  
Mecanismos

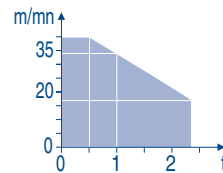
LXP 1

												ch - PS hp	kW		
	15 LVF 10 Optima	m/min	3,6	18	37	49	66						15	11	
		kg	1600	1600	1600	1100	500								
		m/min	3,6	18	37	54	66	1,8	9	19	27	33			
		kg	1600	1600	1600	1000	500	3200	3200	3200	2000	1000			
	3 DVF5	m/min	19 - 41									3	2,2		
	10 LVF 12 Optima	m/min	2	10	17	34	40						10	7,5	
		kg	2400	2400	2400	1000	500								
	2 DVF5	m/min	15 - 38 (0 → 1000 kg)						15 - 30 (1000 → 2400 kg)					2	1,5
	RVF2	tr/min U/min rpm	0 → 0,8										2	1,5	
CEI 38 		IEC 38		kVA											
400 V (+6% -10%) 50 Hz		15 LVF 10 : 20 kVA 10 LVF 12 : 14 kVA			2000/14										

15 LVF 10  
Optima

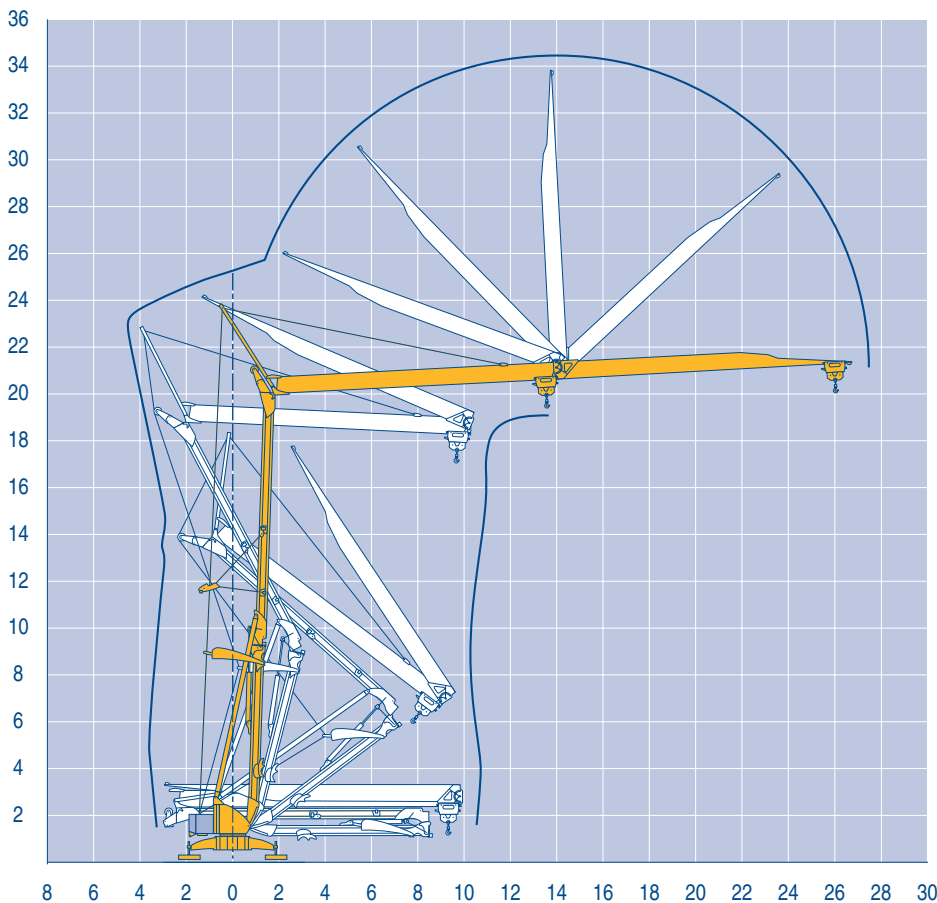


10 LVF 12  
Optima



Montage  
Montage  
Erection  
Montaje  
Montaggio  
Montagem

LXP 1



Igo 26

8 6 4 2 0 2 4 6 8 10 12 14 16 18 20 22 24 26 28 30

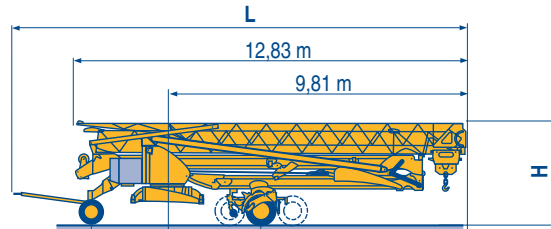
**POTAIN** 

F	D	GB	E	I	P
					
Levage	Heben	Hoisting	Elevación	Sollevamento	Elevação
					
Distribution	Katzfahren	Trolleying	Distribución	Distribuzione	Distribuição
					
Orientation	Schwenken	Slewing	Orientación	Rotazione	Rotação
					
Conforme aux directives CEE sur le niveau acoustique	Gemäss EWG-Richtlinien für den Schall-Leistungspegel	In compliance with the EEC Instructions on noise level	Conforme con las directivas CEE sobre el nivel acustico	Conforme alle direttive CEE sul livello acustico	Conforme as directivas CEE sobre o nível acústico

Transport  
Transport  
Transport  
Transporte  
Trasporto  
Transporte

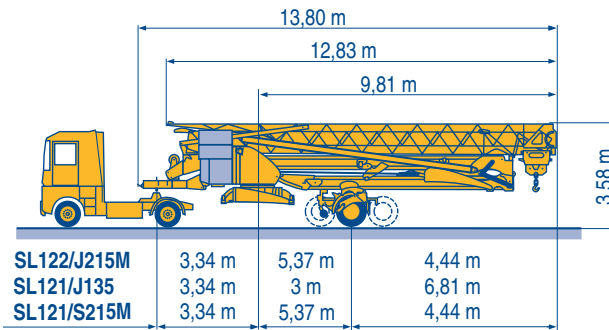
- DS61/S120 ○
- DS61/S125
- DJ80/S120 ○
- DJ80/S125
- DS95/S125
- DJ126M/S125
- DJ126M/S215M

LXP 1



				H	L
DS61/S120	2,45 m	3 m	6,81 m	3,05/3,20 m	14,90 m
DS61/S125	2,45 m	3 m	6,81 m	3,05/3,20 m	14,90 m
DJ80/S120	2,45 m	3 m	6,81 m	3,10 m	14,90 m
DJ80/S125	2,45 m	3 m	6,81 m	3,10 m	14,90 m
DS95/S125	2,45 m	3 m	6,81 m	3,10/3,23 m	15,33 m
DJ126M/S125	2,45 m	3 m	6,81 m	3,20 m	15,35 m
DJ126M/S215M	3,24 m	5,37 m	4,44 m	3,55 m	16,14 m

- SL122/J215M
- SL121/J135
- SL121/S215M



SL122/J215M	3,34 m	5,37 m	4,44 m
SL121/J135	3,34 m	3 m	6,81 m
SL121/S215M	3,34 m	5,37 m	4,44 m



**F**  
Chantier

**D**  
Baustelle

**GB**  
Site

**E**  
Obra

**I**  
Cantiere

**P**  
Estaleiro



Document commercial non contractuel. Pour toute information technique se référer à la notice correspondante

Unverbindliches Vertriebsdokument. Für technische Informationen, siehe die entsprechenden Anweisungen.

This commercial document is not legally binding. For any technical information, please refer to the corresponding instructions.

Documento comercial non contractuel. Para cualquier información técnica, ver la noticia correspondiente.

Documento commerciale non vincolante, per tutte le informazioni tecniche fare riferimento al catalogo istruzioni

Documento comercial não contractual. Para qualquer informação técnica complementar consultar as respectivas instruções

**Manitowoc**  
Crane CARE

**POTAIN**  
Manitowoc Crane Group



**Americas**  
Tel: +1 920 683 6322  
Tel: +1 717 597 8121

**Europe - Middle East - Africa**  
Tel : +(33) 4 72 81 50 00  
Tel : +(44) 191 565 6281

**Asia - Pacific**  
Tel: +(65) 6861 7133  
Fax: +(65) 6862 4142

www.manitowoccrane.com

18, rue de Charbonnières - B.P.173  
69132 ECULLY Cedex - France

Tél. : (33) 4 72 18 20 20  
Fax. : (33) 4 72 18 20 00  
www.manitowoccrane.com www.potain.com

**Igo 26**

Réf. 2003 48 LXP 1

Copyright.Reproduction interdite © POTAIN 2003

Realisation HeadLines